



LUDWIGSBURG

City of Ludwigsburg

Municipal Sustainable Urban Development

Albert Geiger

Head of Department of Sustainable Urban Development

Sustainability 2014, Karlsruhe 8.5.14

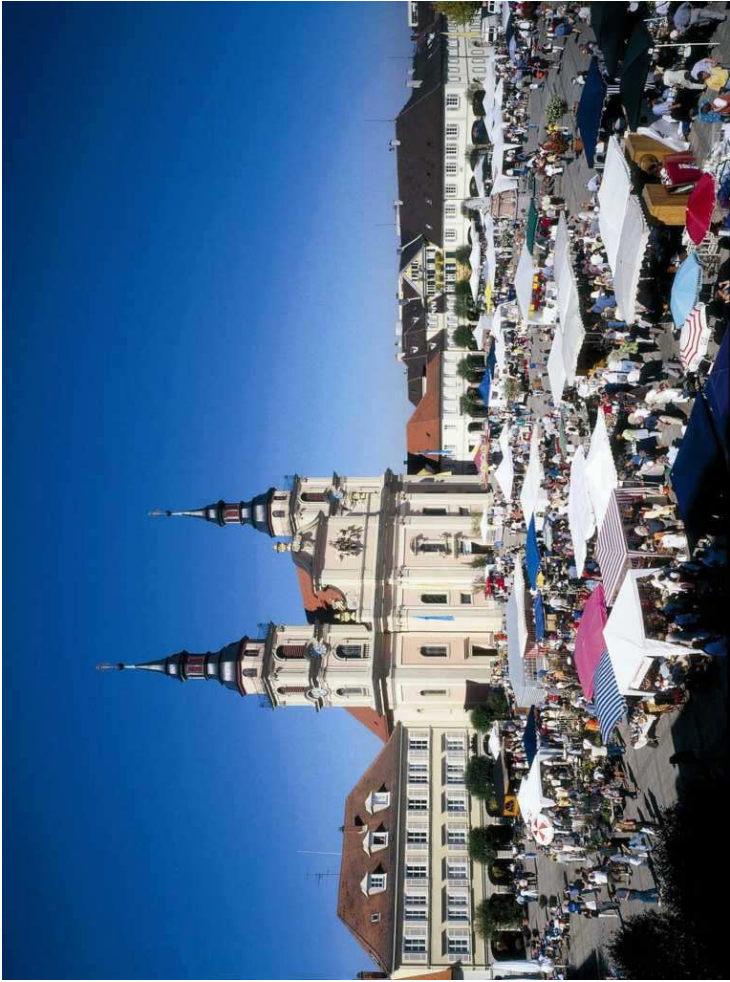


- City of Ludwigsburg
- 89.000 inhabitants
- Part of Stuttgart region



Impressions of former caserns







Lake palace Monrepos

Hunting palace Favorite



challenges of an urban community



...demographic change...

...differentiated way of lives
and milieus...



...climate change...

challenges of an urban community



...integration and migration...



...globalization, debt crisis...

WWF Indikator „Ecological Footprint“

Name of indicator/index: Ecological Footprint

Organization/author: WWF (in collaboration with Global Footprint Network GFN and ZSL)

Year created/periodicity/latest publication: 1996/biannually/2010

Brief description Ecological Footprint (EF) is an accounting framework that tracks humanity's competing demands on the biosphere by comparing human demand against the regenerative capacity of the planet. It does this by adding together the areas required to provide renewable resources people use, the areas occupied by infrastructure, and the areas required for absorbing waste. Since people consume resources and ecological services from all over the world, their Footprint is calculated as the sum of these areas, regardless of where they are located on the planet.

There are several types of ecological footprint: EF for nations helps countries to understand their national ecological balance sheet, and so manage their resources, EF for cities allows governments to track a city or region's demand on natural capital, EF for business helps corporations improve their market foresight, set strategic direction, manage performance and communicate their strengths, and EF for an individual demonstrates personal pressure on natural resources.

Country coverage: EF is calculated for all countries and for political groupings

Style of presentation:



http://wwf.panda.org/about_our_earth/all_publications/living_planet_report

Name of indicator/index: Eurostat Sustainability Indicator Set

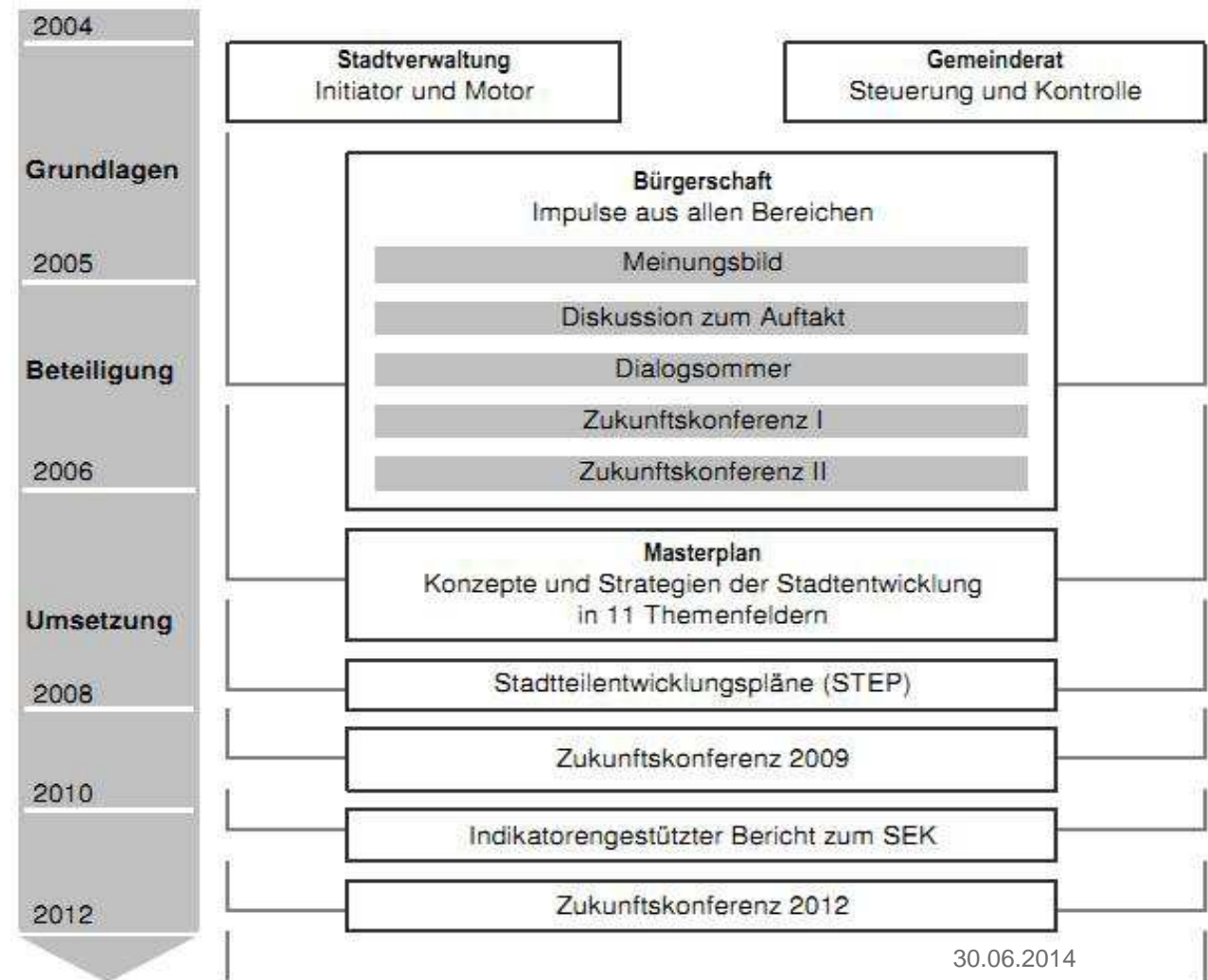
Stadtentwicklungskonzept

- Fragen an die Zukunft



„Chancen für Ludwigsburg“ – partizipativer Prozess

- Start des Prozesses 2004
- Leitsätze und Ziele zur nachhaltigen Stadtentwicklung
- 11 Themenfelder



Participation

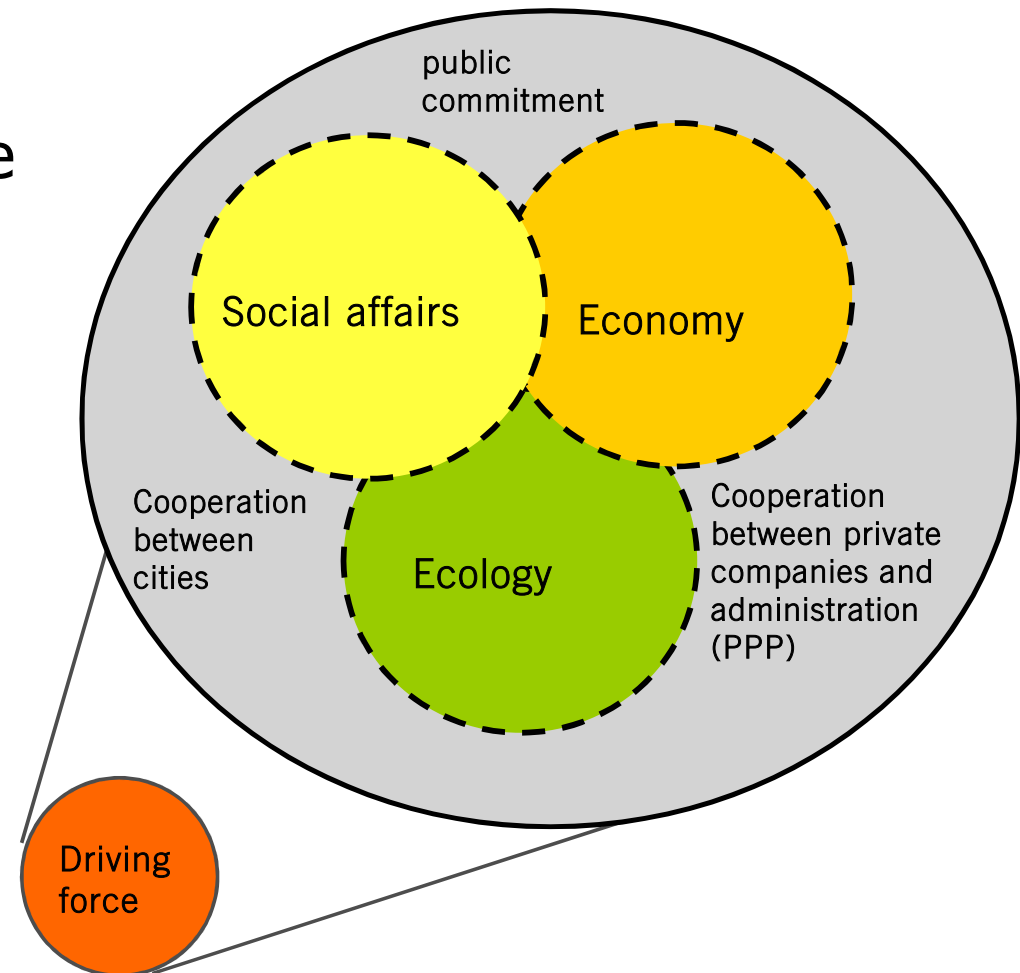


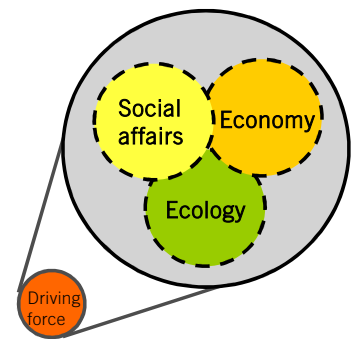
City development concept within 11 areas



Department of Sustainable Urban Development

- advances process of sustainable city development
- steering and coordination
- integrated works procedure
- intensive networking with other parts of the administration and external partners





Management system

Further development
of the strategic
objectives

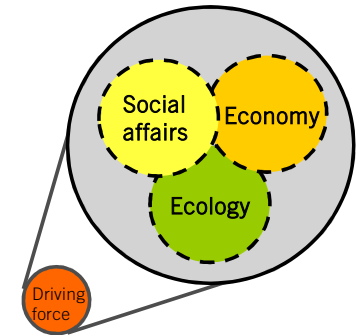
examination of the
local situation



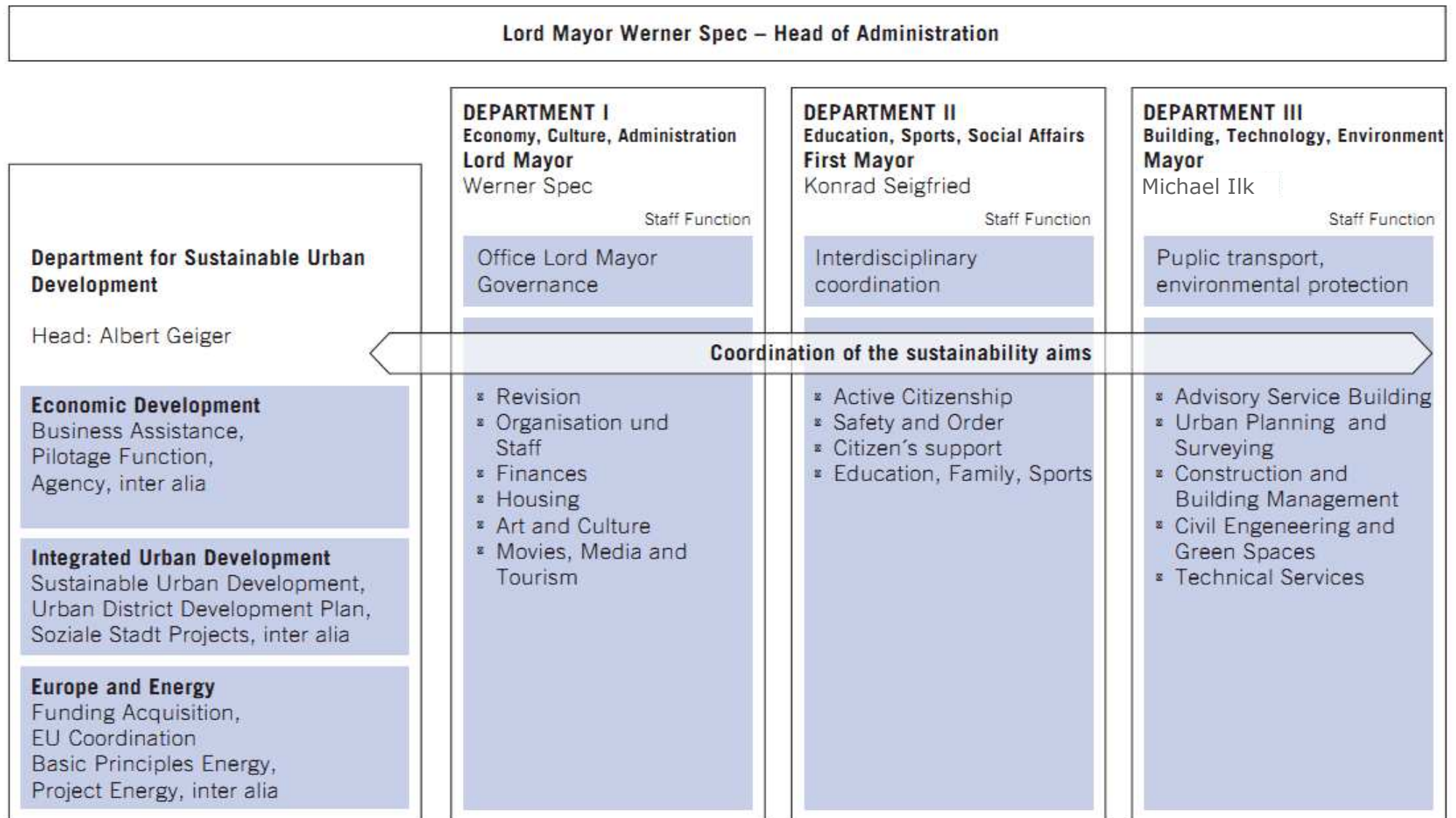
report and evaluation
(indicators)

approval of the principles
and strategic objectives
for urban development
in 11 areas

implementation using
the city development
concept master plan



Structure of administration



Monitoring sustainable urban development

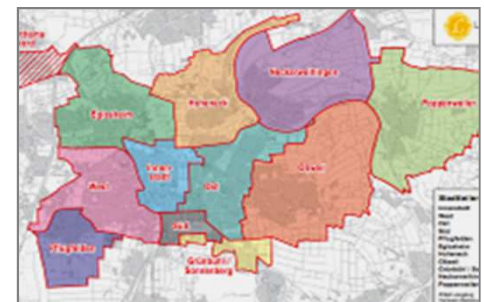




LUDWIGSBURG

District Development Plans

- One plan for each district
- Developed together with citizens
- Concretizes the urban development concept
- Consideration of every subject level
- Guideline for administration and Politics
- Close collaboration with municipal councils



Citywide strategy

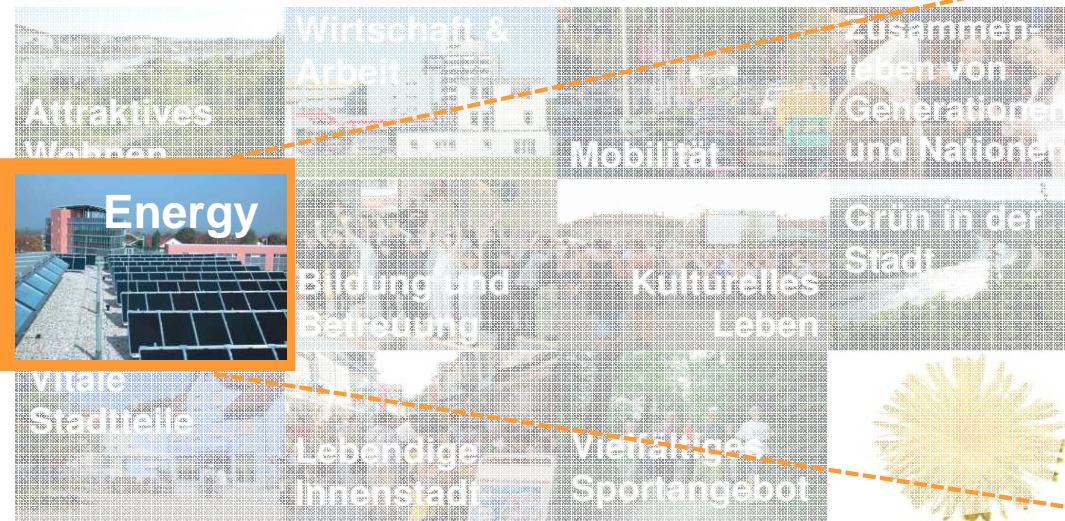
Planning Level

Sectoral Planning Energy/Climate Protection

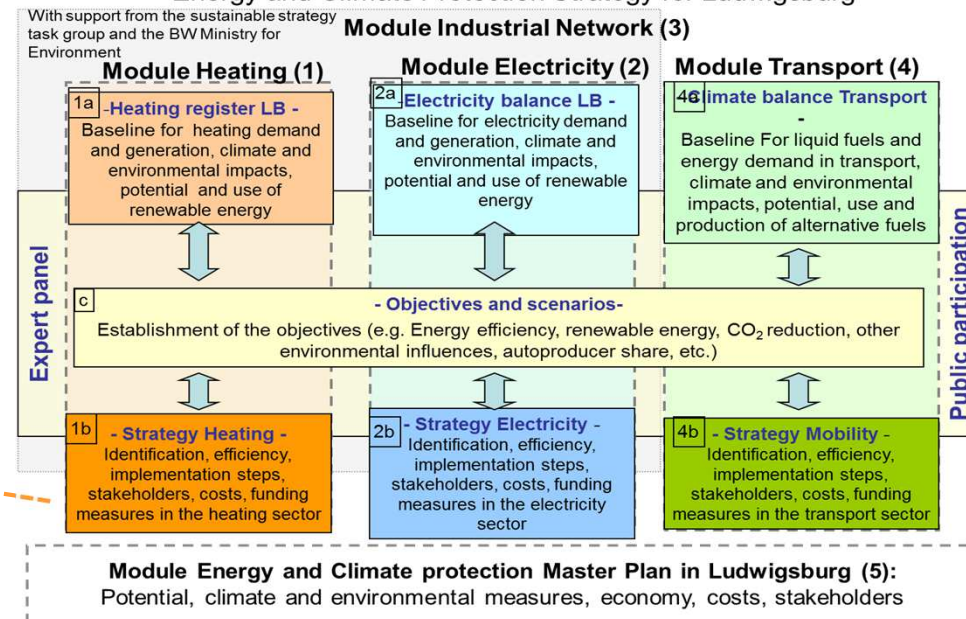
City Development Concept
LUDWIGSBURG (SEK)

integrated

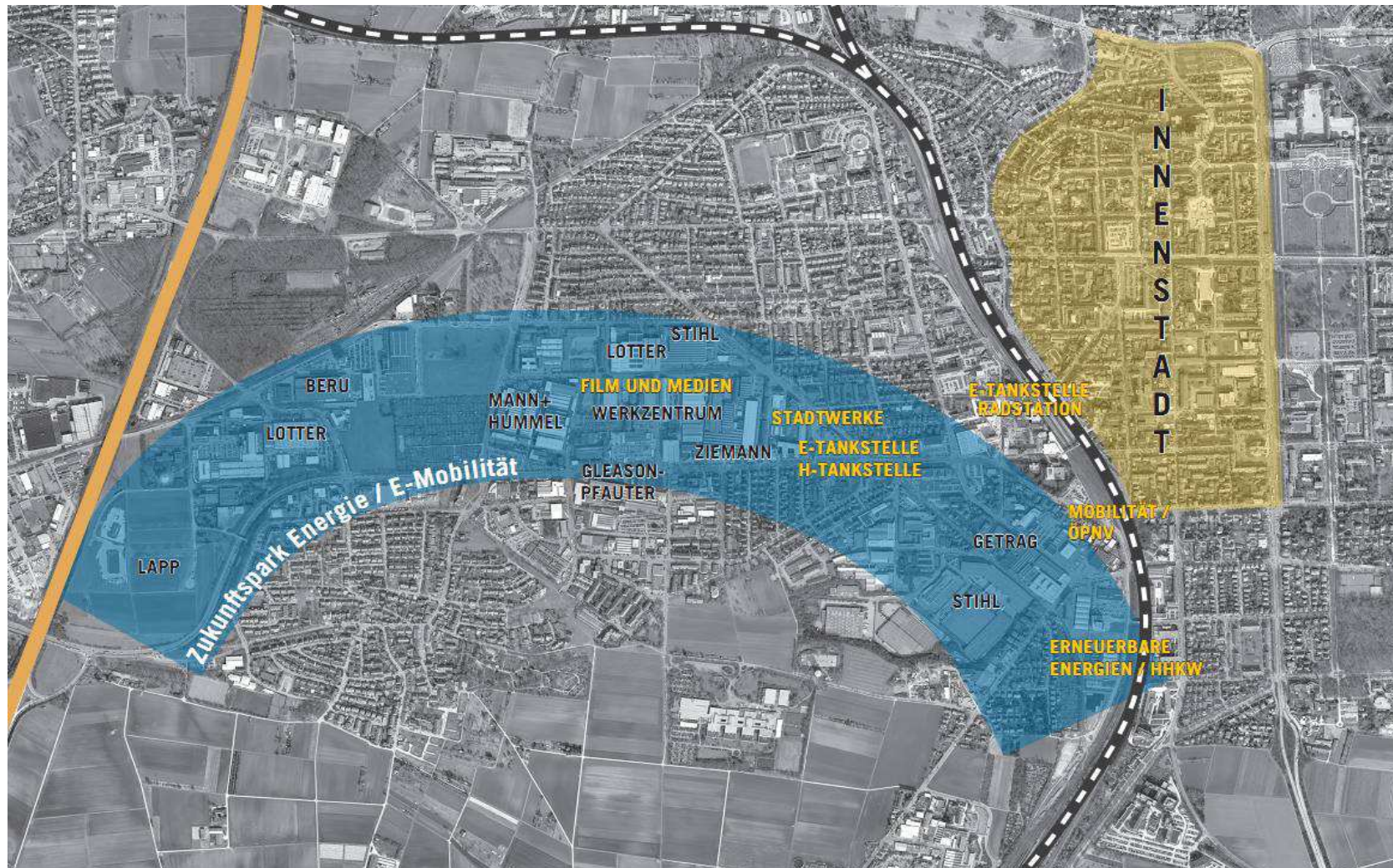
Citywide Energy Strategy
(GEK)



Organisation and Methodology for the
Energy and Climate Protection Strategy for Ludwigsburg



Total Energy Concept Ludwigsburg – Example – developmental arc Ludwigsburg-West



Biomass cogeneration plant

- public utility company Luwigsburg-Kornwestheim (SWLB) opened the wood-fired cogeneration plant 2009
- Electric power: 2MW
- heat power: 12MW
- Covers 70% of the district heating demand, supplies 3,000 households
- CO₂ savings: 18,000 t per year



New building project: Logistics and services centre – company Lapp



- realisation 2012

Project: Relocation head quarter and logistics centre from Stuttgart to Ludwigsburg, 2012 company Hahn & Kolb



Electromobil city administration Ludwigsburg

How can we cover our mobility demand with electromobil vehicles?

- 3 Mitsubishi i-MiEV
- 1 Berlingo First Electric
- 5 E-scooter
- 5 Pedelecs
- 2 Segways
- 6 E-Bike-Boards



success factors for sustainable urban development

- Budget that is fair for all generations
- Integrated urban development concept
- Inter-departmental organisational structure and coordination
- Comprehensive networking of stakeholders
- participation as a matter of course
- closelinking of content and financing funding programmes
- district manager/ local contact person
- local infrastructure
- support from the city administration executives and local politics
- municipal companies as strong partners



Thank you very much for your attention!

